

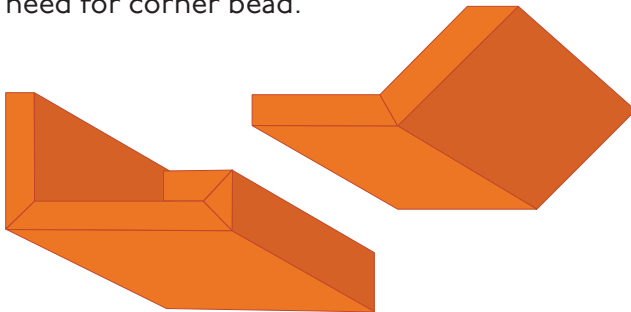
# EDGE-FX™

## LIGHT COVES

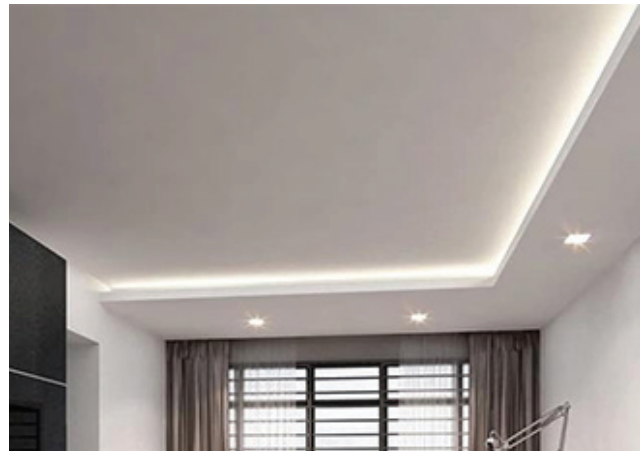
Lighting can transform any space. Lighting designs need careful execution to create the best results for both commercial and residential spaces. Proper implementation can make the difference to the success of a space. Light coves can be finicky to finish, especially out of gypsum, and extensive lengths are impossible to make completely straight by conventional methods, but factory precise EDGE-FX™ processes for preformed gypsum means that perfect angles and straight edges are achieved every time.

### LOCALLY PRODUCED

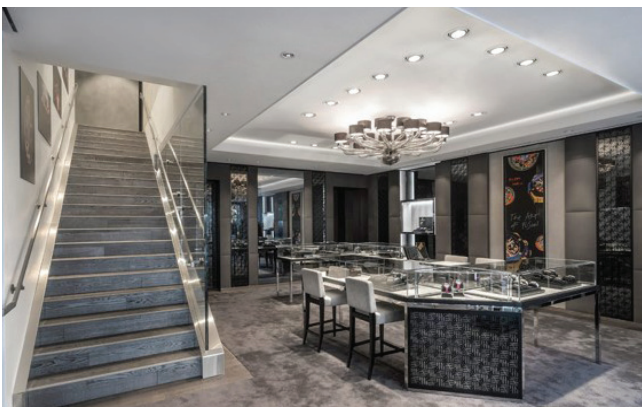
Your light coves are produced based on project requirements in Surrey B.C. and can be delivered to site ready for installation with corners and edges prefinished; eliminating the need for corner bead.



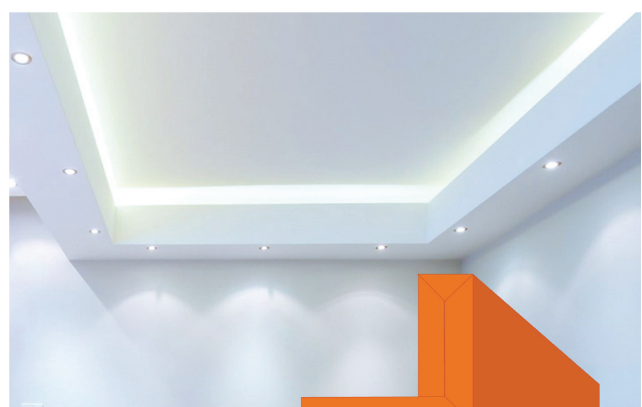
### PRE-FINISHED EDGES



### PRECISION DETAIL



### CONTINUOUS STRAIGHT LENGTHS



# EDGE-FX™

PRECISE ANGLES

## KNIFE EDGE DETAILS

High Crest's EDGE-FX™ pre-fabricated knife Edge Details with Pre-Finished Edges are the perfect solution for knife edge details on lighting coves. Typically only achievable out of metal or wood, Gypsum knife edge profiles are easier to install and offer a factory precise finish, and correct angles every time. Gypsum to gypsum finished mean no cracking or build up on joints because of compatible materials. Our Machine precise methods not only mean perfect angles, but also mean that no matter how far the profile extends you will have perfect straight lengths.

### PRODUCT FIT AND FINISH

- Custom made for your project
- Exact angles to within the degree
- Almost any angle is achievable
- Machine precise edges
- Continuous straight lengths
- Drywall to drywall finishes mean no cracking or buildup
- pre-finished edges are ready to paint

### EASY INSTALLATION

- Comes ready to install
- Tape-in using conventional drywall method

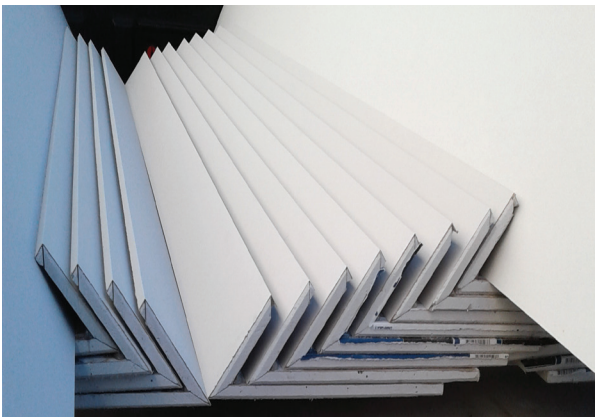
### ECONOMICAL

- Save time and labour cost
- Fewer cuts on site

### FAST DELIVERY

- Locally Manufactured in B.C. Canada

## CONTINUOUS STRAIGHT LENGTHS



## PRE-FINISHED EDGES

